

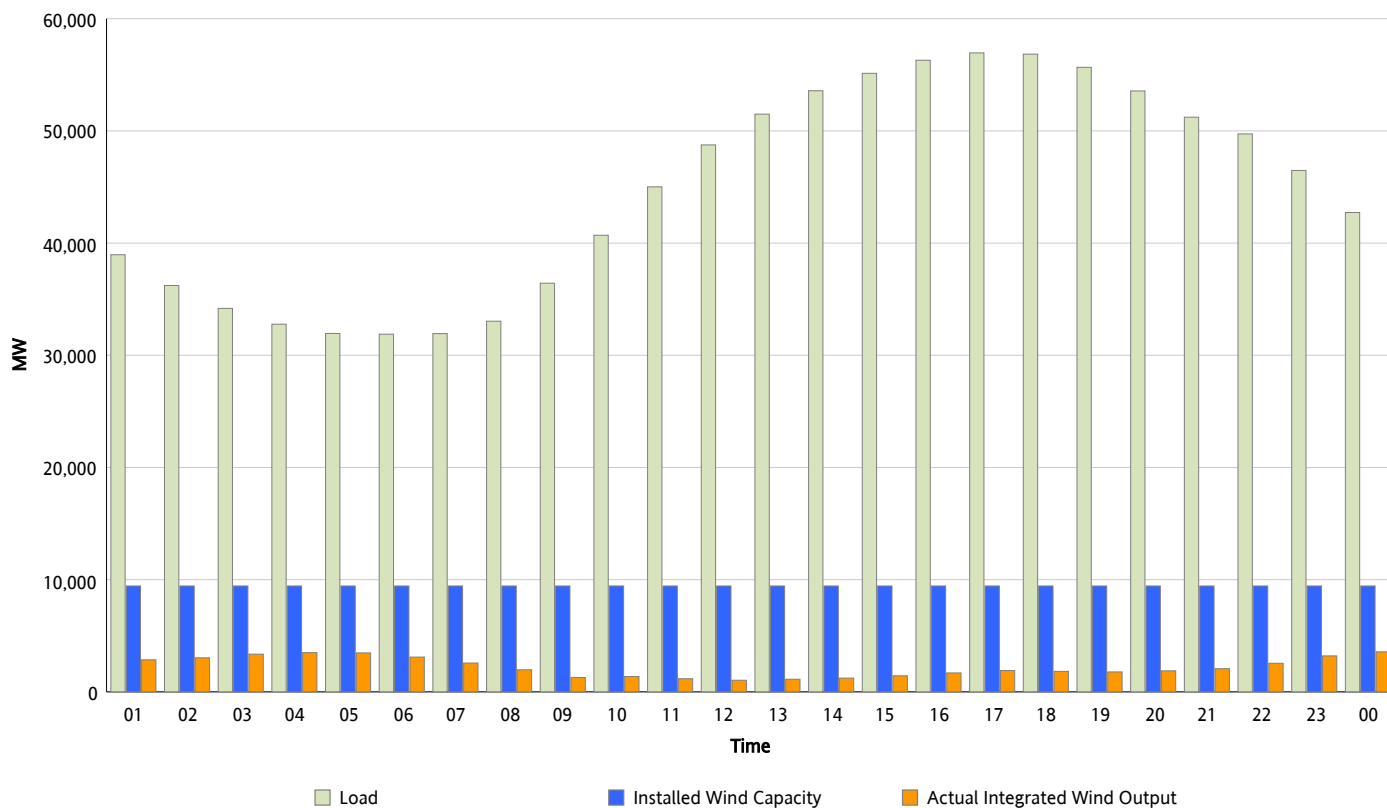


## ERCOT Grid Operations

### Wind Integration Report : 06/23/2012

Peak Load	56,952 MW
Load Peak Hour (HE)	17
Wind Over Peak	1,901 MW
Wind Record 06/19/12	8,368 MW
Max Wind Value*	3,689 MW
Wind Peak Time	23:59
Wind Integration %	9.02 %

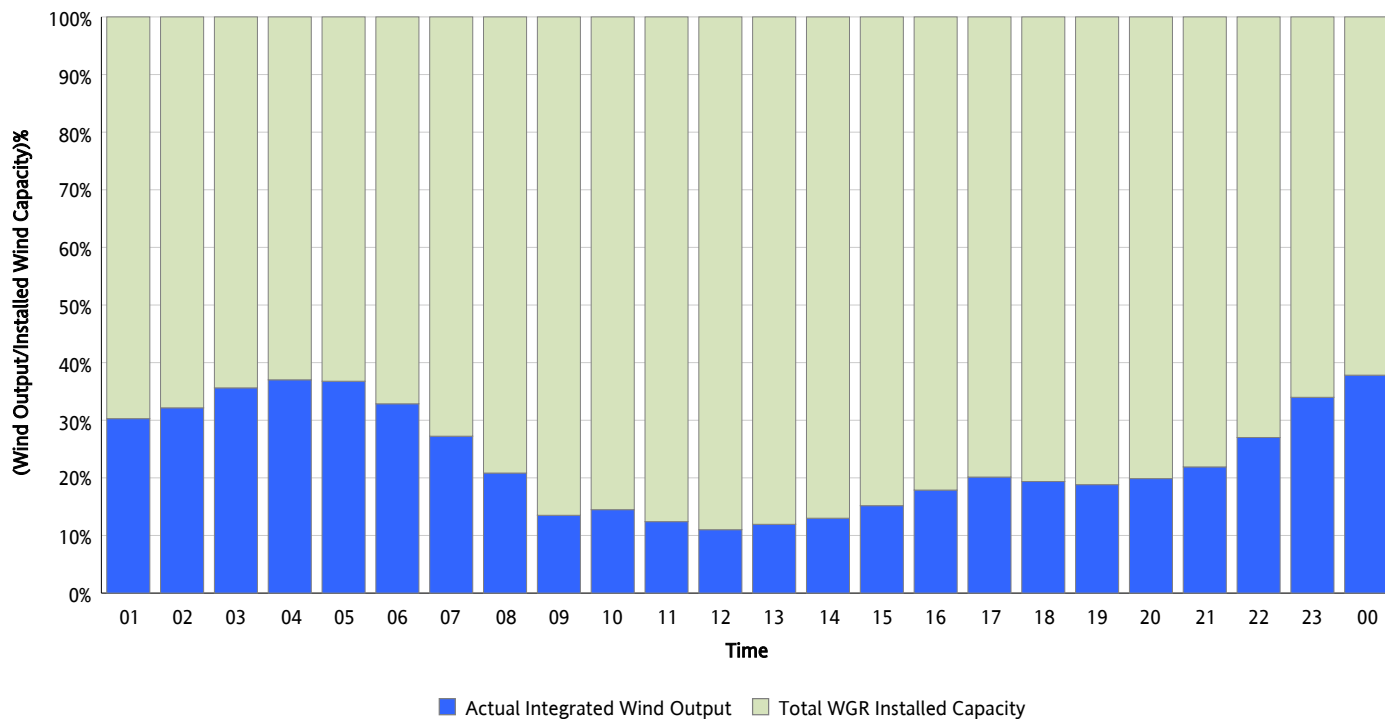
**Hourly Average Actual Load vs. Actual Wind Output**  
**06/23/2012**



*\* Wind Record and Wind Max represent instantaneous values and the rest of the values are integrated over the hour*

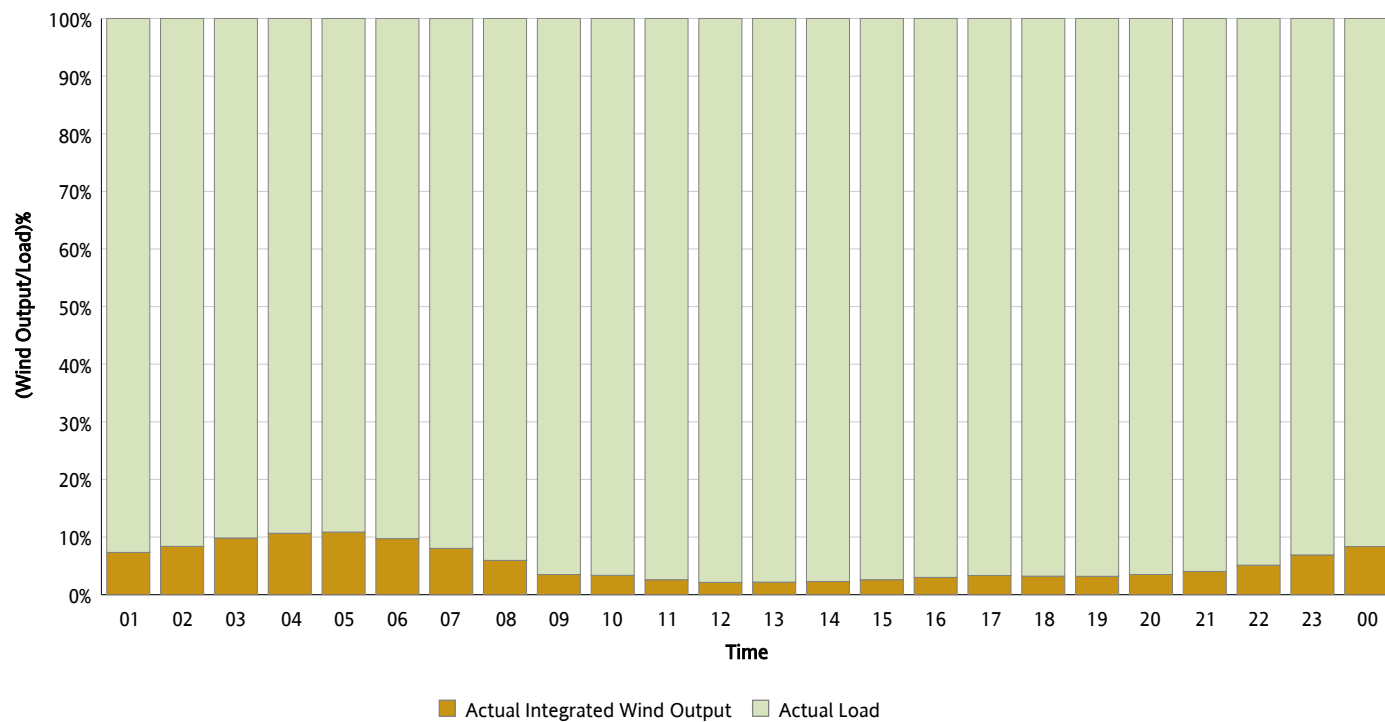
## Actual Wind Output as a Percentage of the Total Installed Wind Capacity

06/23/2012



## Actual Wind Output as a Percentage of the ERCOT Load

06/23/2012



## ERCOT Load vs. Actual Wind Output

06/16/2012 - 06/23/2012

